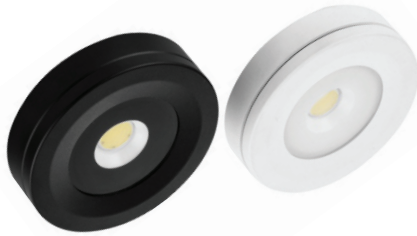


LED MINI SURFACE DOWNLIGHT



SL SERIES



Key Features

- Light, compact and ultra-thin
- Built-in integrated driver for ease of installation
- More than 90% energy savings compared with 35W halogen
- Vibration-resistant
- Dimmable LED
- Long service life of 35,000 hours
- Safety compliance

Application

Cabins, Lounges, Accommodation areas, Restrooms

Material

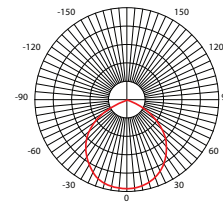
Corrosion-resistant aluminium housing with toughened glass diffuser

Protection Class

IP44

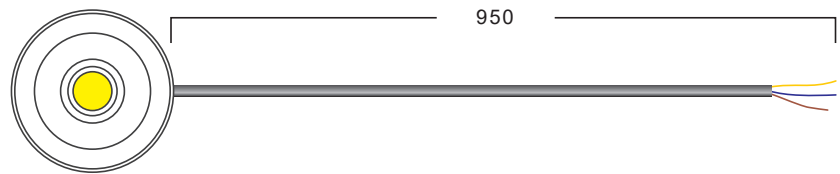
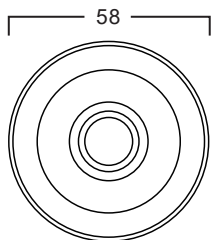
Weight

0.15Kg



Height	AVRE	Diameter
1.50m	14.73lx	377.02cm
2.00m	8.29lx	502.7cm
4.00m	2.07lx	1005.39cm
4.50m	1.64lx	1131.07cm
6.00m	0.92lx	1508.09cm

Angle: 103°



TECHNICAL SPECIFICATIONS IP 44

BH Code	Type	Housing Colour	Main Voltage	Power	CCT	Beam Angle	Ambient Temp (Ta)	System Lumen
LASL33BA2	SL3A2	Black	220V - 240V AC	3W	3000K	90°	-20°C ~ +40°C	295lm
LASL33WA2	SL3A2	White	220V - 240V AC	3W	3000K	90°	-20°C ~ +40°C	295lm

Also available in other CCT.
100V-120V AC model option available.

